



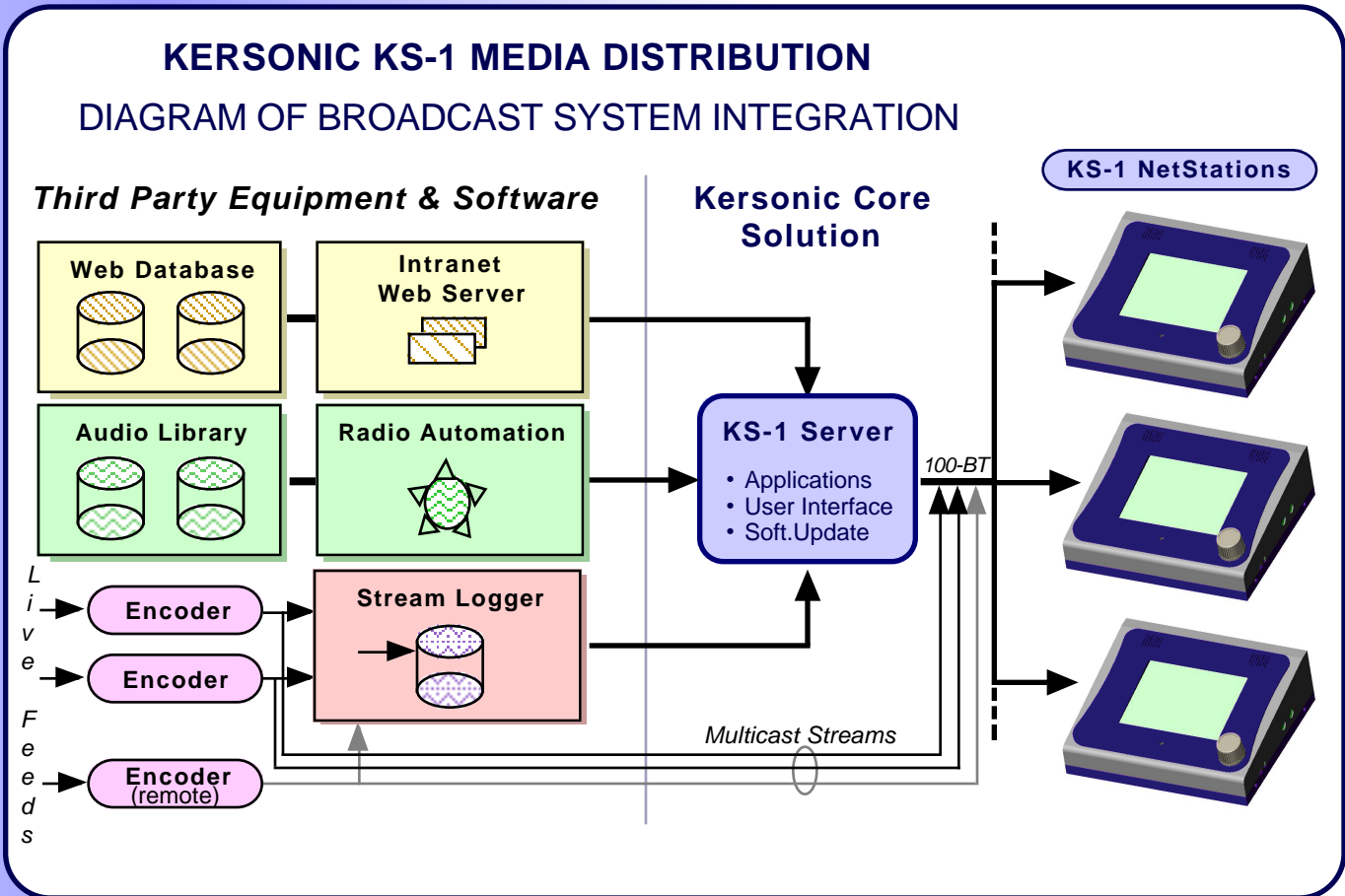
Media Server

Freedom for Broadcaster's Audio Resources !

Kersonic KS-1 Media Server provides a smart link between your existing broadcast system and Kersonic KS-1 Listening NetStations.

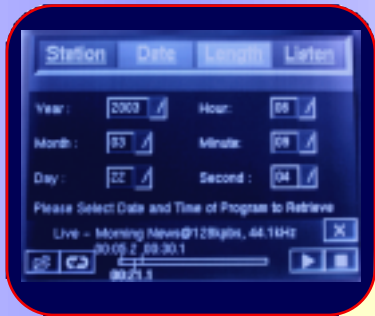
KS-1 Media Server consists of a scalable web server with modular plug-ins. The plug-in architecture allows easy access to specific resources, such as web databases, radio automation tools, audio libraries and live streams.

- ### Server Main Features
- **Connect** with Online Audio Resources.
 - **Customize** the Graphical Environment on Kersonic KS-1 Listening NetStations.
 - **Update** firmware for Kersonic KS-1 Listening NetStations remotely.



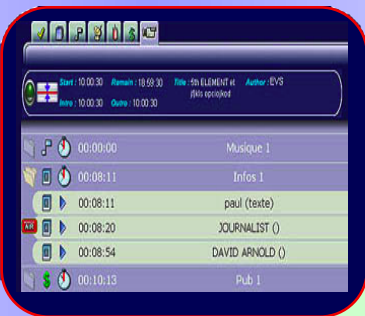
KS-1 Media Server can easily be adapted to your working environment, including customization for specific task or user groups. Please contact Kersonic for a free evaluation of your integration needs.

Examples of KS-1 Media Server Plug-ins



AUDIO RETRIEVER PLUG-IN

- **Browse** archives using easy icon-driven interface.
- **Find** the right file by station, program, name, and date.
- **Edit** content on-the-fly with Kersonic KS-1 'Q-Edit' tool.
- **Save** selection on server or memory card for later use.



RADIO AUTOMATION PLUG-IN

- **Connect** to your Radio Automation System via network.
- **Enable** KS-1 Listening NetStations to access to key software features from major radio automation vendors.
- **Simplify** the use of main functions for non-technical staff.
- **Free** your PC using Kersonic dedicated solutions.



OnAIR MONITOR PLUG-IN

- **Listen** to local or remote live feeds.
- **Enjoy** 'drop-out-free' audio quality.
- **Record** live content for editing or logging.
- **Conserve** network bandwidth using multicast streaming.

For more information about Kersonic products, please send e-mail to info@kersonic.com